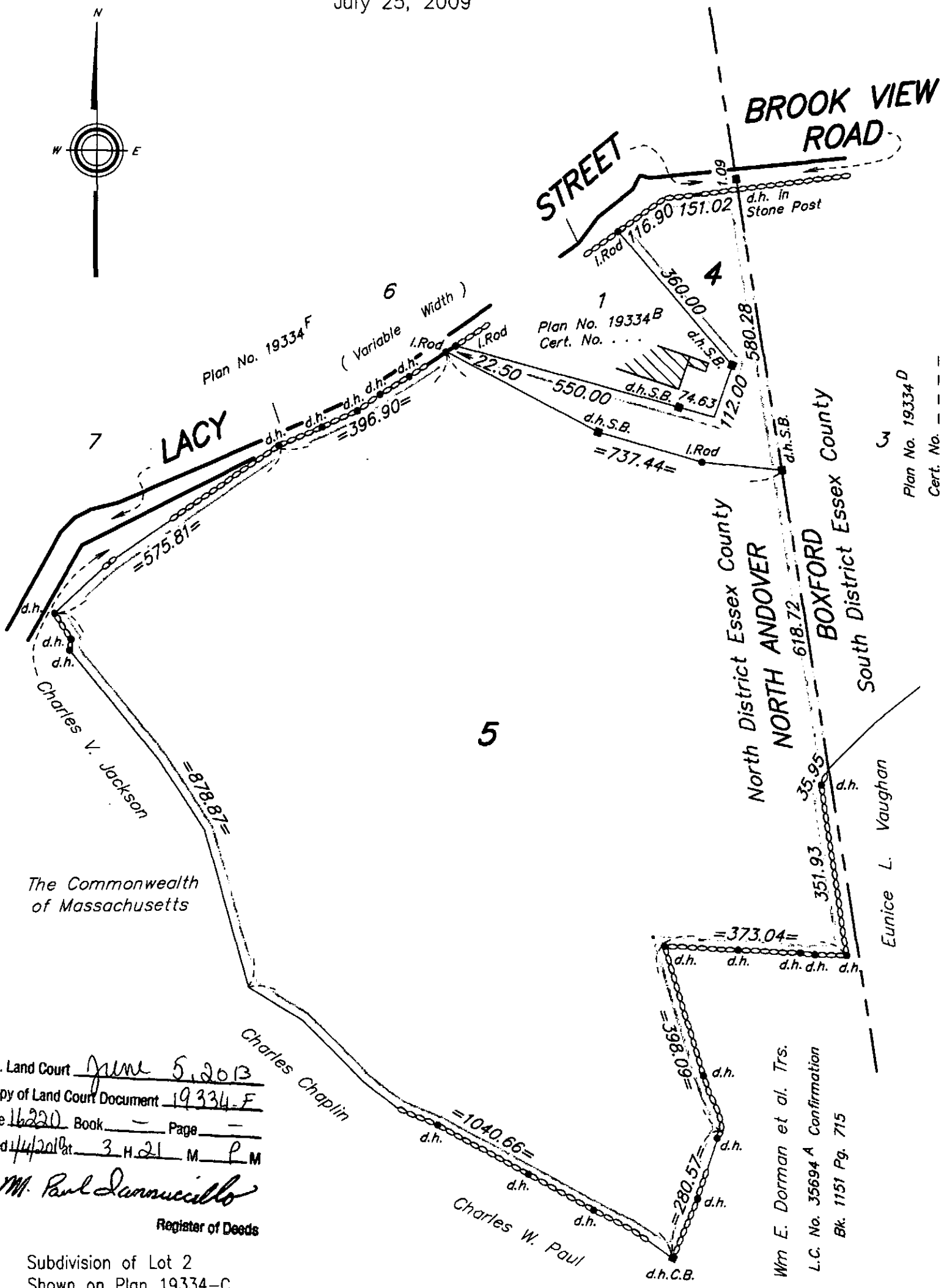
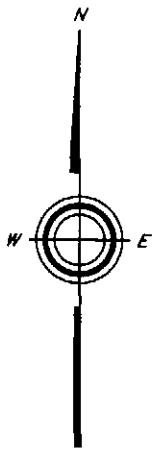


SUBDIVISION PLAN OF LAND IN NORTH ANDOVER

Donohoe and Parkhurst, Inc., Surveyors

July 25, 2009

19334E



3  
Plan No. 19334D  
Cert. No. ---

Essex ss. Land Court June 5, 2013  
 A true copy of Land Court Document 19334-F  
 Certificate 16220 Book --- Page ---  
 Registered 11/18/2009 at 3:21 M. P  
 Attest: M. Paul Lannucillo  
 Register of Deeds

Subdivision of Lot 2  
 Shown on Plan 19334-C  
 Filed with Cert. of Title No. ---  
 North Registry District of Essex County

Separate certificates of title may be issued for land  
 shown hereon as Lots 4 and 5  
 By the Court.  
Deborah J. Patterson  
 Recorder  
 November 18, 2009

Wm E. Dorman et al. Trs.  
 L.C. No. 35694 A Confirmation  
 Bk. 1151 Pg. 715

Abutters are shown as  
 on original decree plan.

Copy of part of plan  
 filed in  
**LAND REGISTRATION OFFICE**  
 Nov. 18, 2009  
 Scale of this plan 240 feet to an inch  
 T.C. Pontbriand, Acting Engineer for Court