

PARCEL N°	OWNER OF RECORD	AREA
1	JEAN PAUL PROULX 1812 TURNPIKE ST. N.A. MASS.	7.0 Ac±
2	JEAN PAUL PROULX 1812 TURNPIKE ST. N.A. MASS.	10.7 Ac±
3	JEAN PAUL PROULX 1812 TURNPIKE ST. N.A. MASS.	15.7 Ac±
4	JEAN PAUL PROULX 1812 TURNPIKE ST. N.A. MASS.	6.2 Ac±
5	TOWN OF NO. ANDOVER.	23.4 Ac±
6	ALLAN DOYLE 90 ALDEN ST LYNN, MASS.	8.68 Ac
7	THEODORE J. & FLORENCE M. MEADOWS 2357 TURNPIKE ST. N.A. MASS.	18.4 Ac.
8	MARGARET R. SIMON. 41 MERRIMACK ST. METHUEN, MASS.	2.14 Ac±

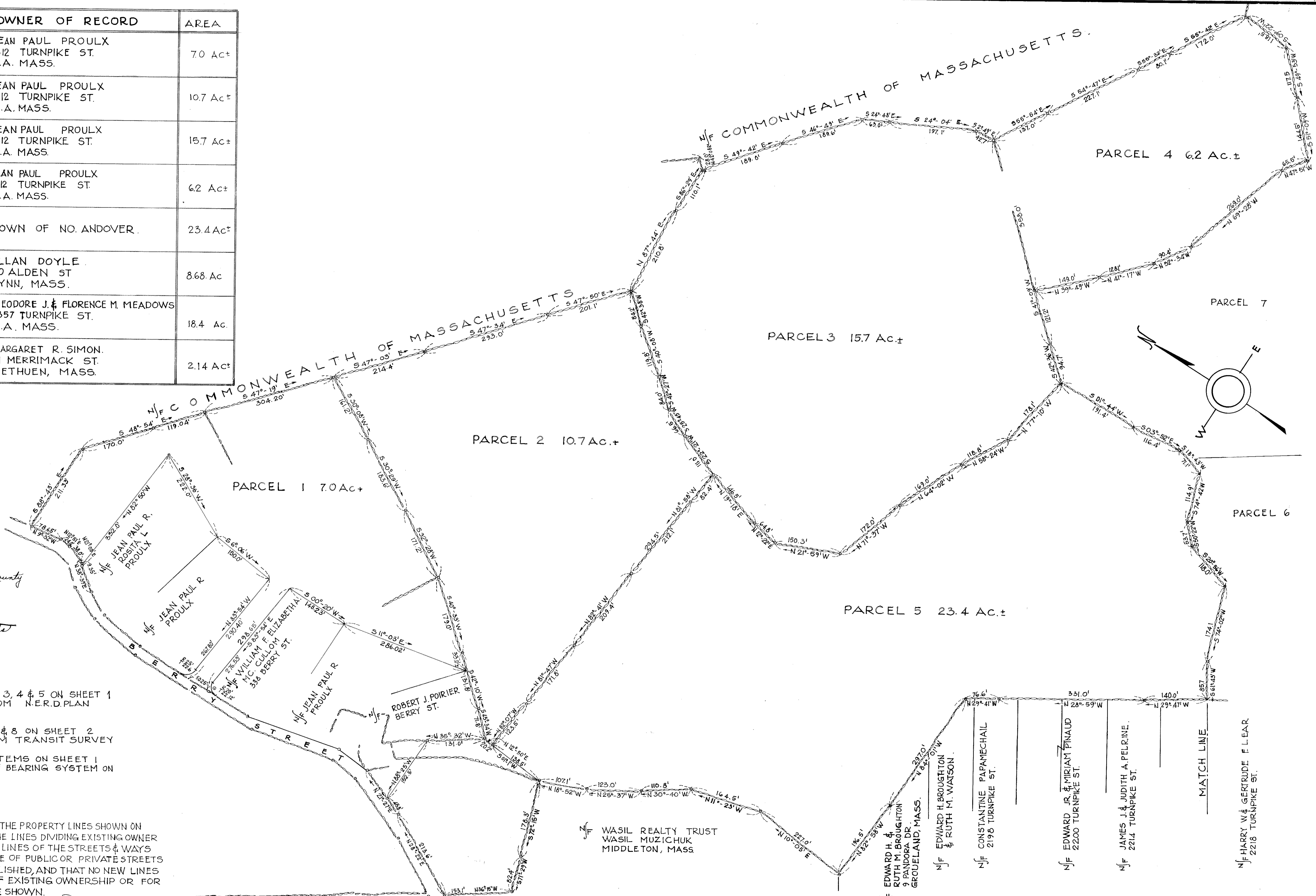
Plan # 7576
Registry of Deeds
Northern District Essex County
Received and recorded
April 7, 1977 at 3:13 P.M.
Attest: *Thomas P. Boyle*
Register of Deeds

NOTES:
PARCELS 1, 2, 3, 4 & 5 ON SHEET 1
COMPILED FROM N.E.R.D. PLAN
N 6242
PARCELS 6, 7 & 8 ON SHEET 2
COMPILED FROM TRANSIT SURVEY
BEARING SYSTEMS ON SHEET 1
INDEPENDENT OF BEARING SYSTEM ON
SHEET 2

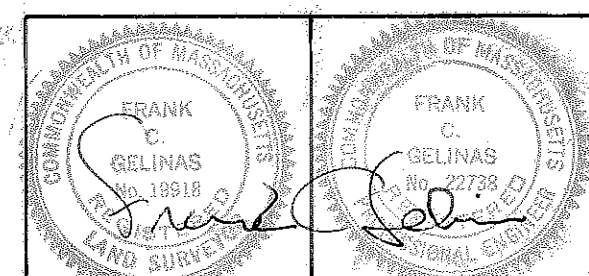
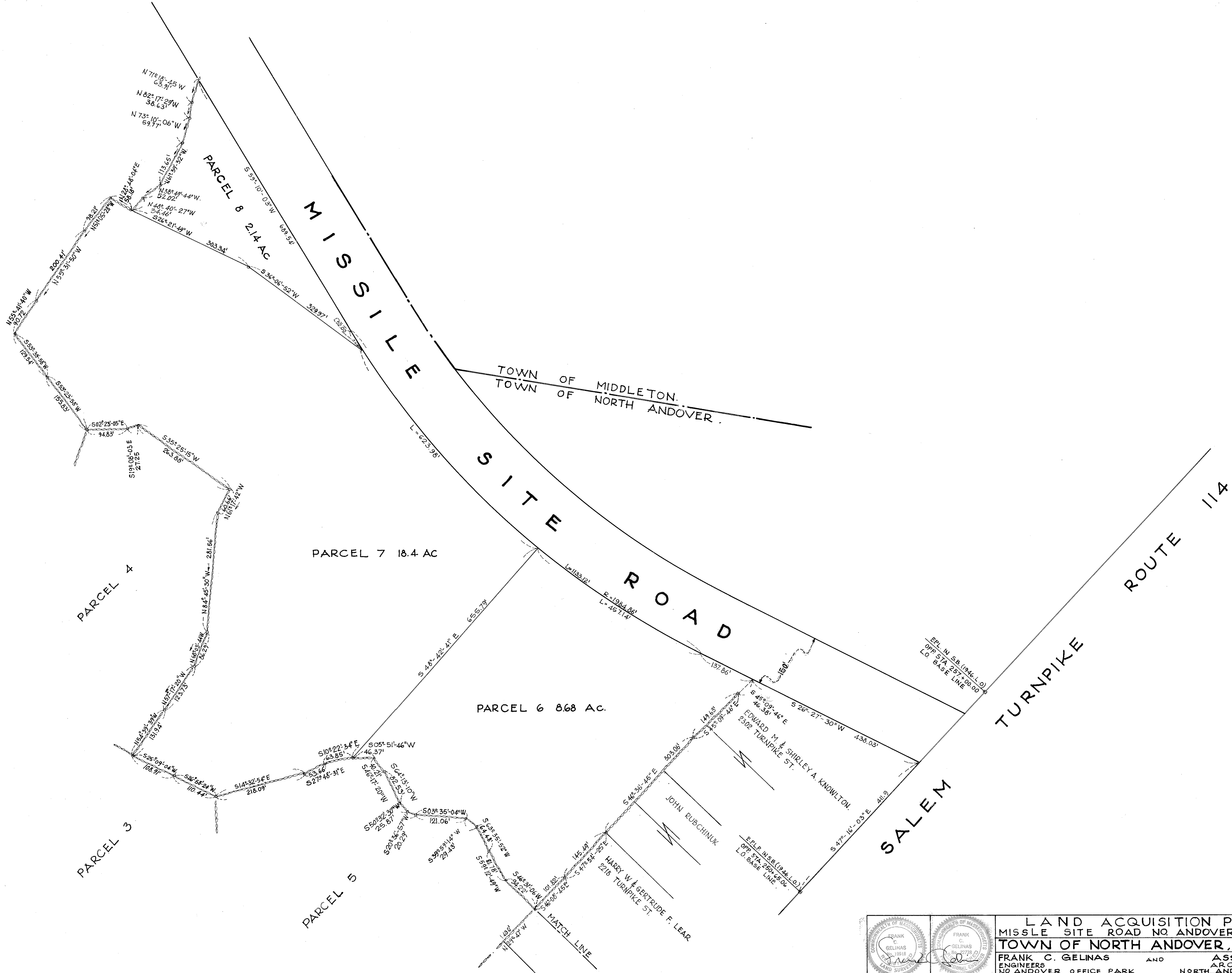
I CERTIFY THAT THE PROPERTY LINES SHOWN ON
THIS PLAN ARE THE LINES DIVIDING EXISTING OWNER
SHIPS AND THE LINES OF THE STREETS & WAYS
SHOWN ARE THOSE OF PUBLIC OR PRIVATE STREETS
ALREADY ESTABLISHED, AND THAT NO NEW LINES
FOR DIVISION OF EXISTING OWNERSHIP OR FOR
NEW WAYS ARE SHOWN.

Frank C. Gelin
REGISTERED LAND SURVEYOR
DATE: AUGUST 7, 1976.

SALEM TURNPIKE ROUTE 114.



		LAND ACQUISITION PLAN		SCALE: 1"=100'
		MISSILE SITE ROAD NO. ANDOVER, MASS.		ISSUED: 8.7.76
FRANK C. GELINAS AND ASSOCIATES ARCHITECTS		NO. ANDOVER OFFICE PARK		NORTH ANDOVER, MASS.
				N ^o 1 OF 2



LAND ACQUISITION PLAN
 MISSILE SITE ROAD NO. ANDOVER, MASS.
 TOWN OF NORTH ANDOVER, MASS.
 FRANK C. GELINAS AND ASSOCIATES ARCHITECTS
 NO. ANDOVER OFFICE PARK NORTH ANDOVER, MASS.

SCALE 1"=100'
 ISSUED: 8.7.76
 DWG. N^o 2 OF 2