

86167

L-4993-1

FORM 134-9C-L-3-52

Source: Oct. 2, 1953 at 9:10 a.m.
Recd. & endorsed in Essex No. Dist. Reg. of Deeds
See Easement B. 781, P. 448.
Plan # 2738.

Attest: *G. Hudson Dyer* Regr.

ROGER M.
LOVELL

WILFRED C. and
ANGELINA T. LOVE

COMMONWEALTH
OF MASSACHUSETTS

Pile of Stones

165' S75°W
104' N27°22'E
236.2'
148' S70°W

N02°33'E 654.6'

Edge of Easement

ALBERT M.
CREIGHTON

ROGER M.
LOVELL

Survey Line A

751.6' S52°22'W
502°33'W

98'

190'

192'

207'

304'

10'

Edge of Easement B

473'

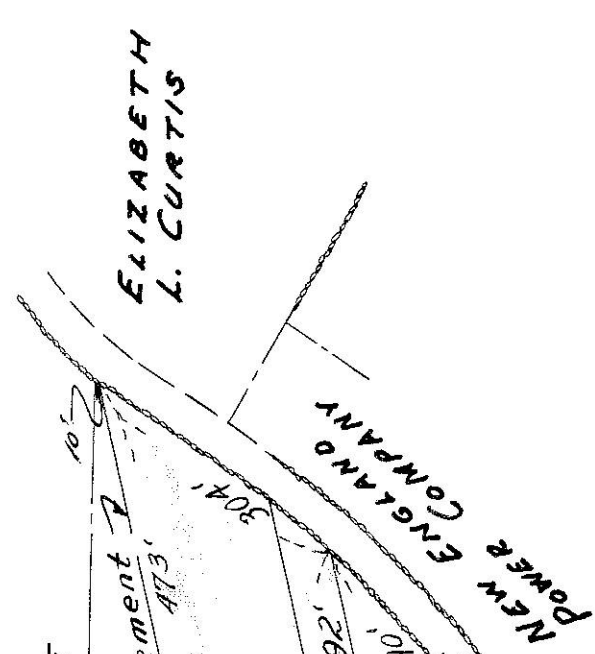
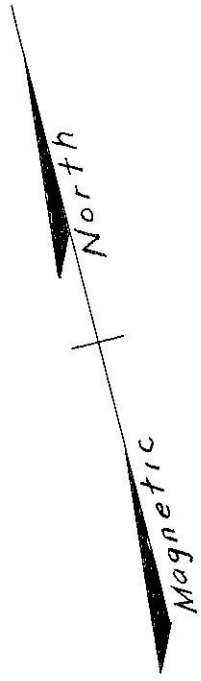
304'

10'

Edge of Easement A

473'

10'



INCHES ON ORIGINAL

NEW ENGLAND POWER SERVICE COMPANY
PART OF NEW ENGLAND ELECTRIC SYSTEM
BOSTON, MASS.
PLAN SHOWING EASEMENT ACROSS LAND
IN NORTH ANDOVER, MASSACHUSETTS
TO BE CONVEYED BY
ROGER M. LOVELL
TO
NEW ENGLAND POWER COMPANY
SCALE 1" = 200' DATE May 7, 1953

NORTH ANDOVER, MASS.
ESSEX COUNTY

INCHES ON ORIGINAL

L-4993-1