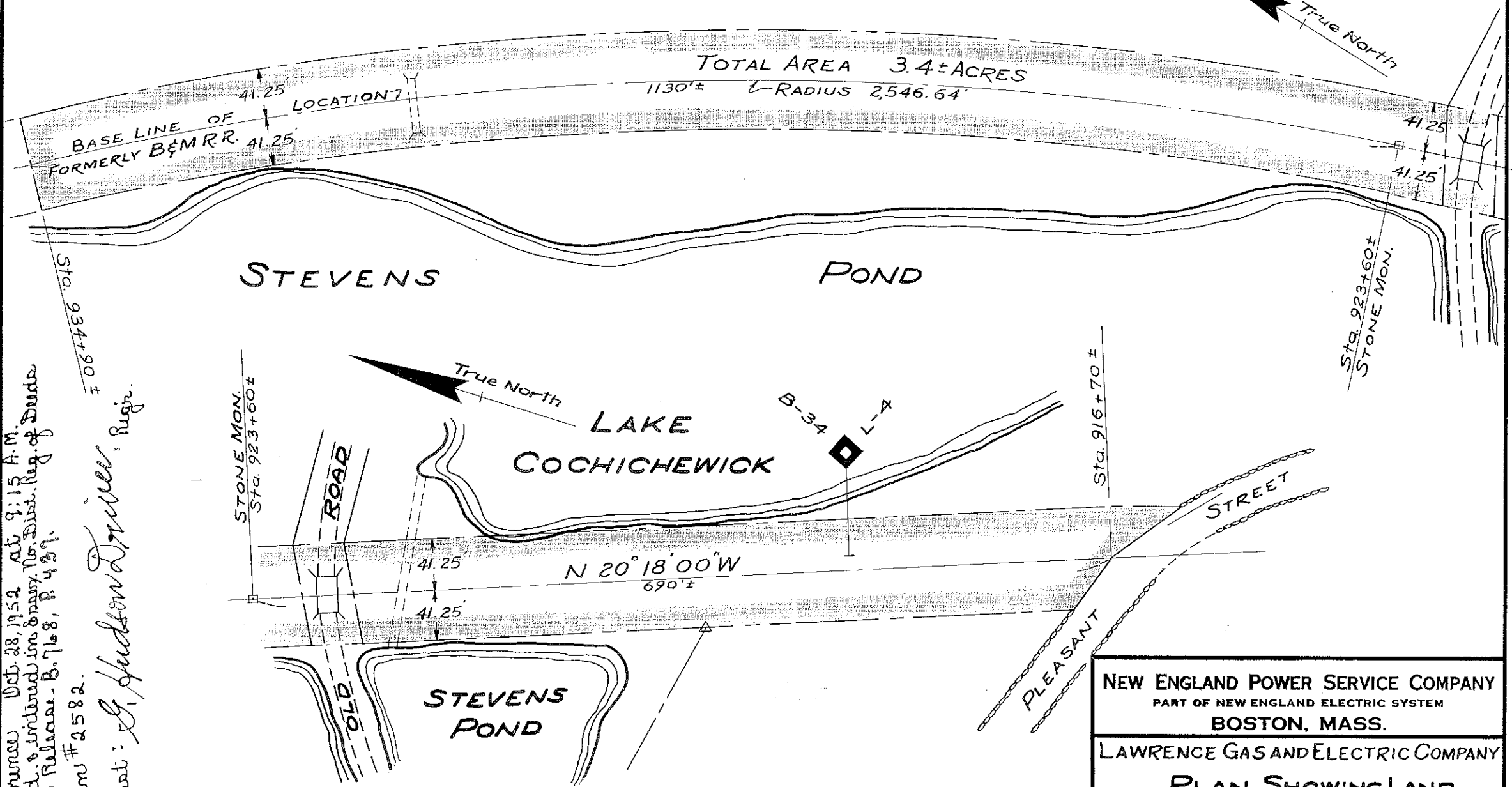


L-4809

FORM 134-9C-L-8-50

M. T. STEVENS AND SONS COMPANY

TOTAL AREA 3.4± ACRES
1130'± L-RADIUS 2,546.64'



Source: Dec. 28, 1952, at 9:15 A.M.
 Field & entered in map No. Dist. Reg. of Deeds
 See Release B. 768, P. 437.
 Plans # 2582.
 Witness: S. Hudson Trill, Regr.

Ref. B & M. Plans
 V 7.12/18 & V 7.12/19

NORTH ANDOVER, MASS.
 ESSEX COUNTY

NEW ENGLAND POWER SERVICE COMPANY
 PART OF NEW ENGLAND ELECTRIC SYSTEM
 BOSTON, MASS.

LAWRENCE GAS AND ELECTRIC COMPANY
 PLAN SHOWING LAND
 IN
 NORTH ANDOVER, MASS.

SCALE 1" = 100' DATE JULY 30, 1952

INCHES ON ORIGINAL

INCHES ON ORIGINAL

L-4809