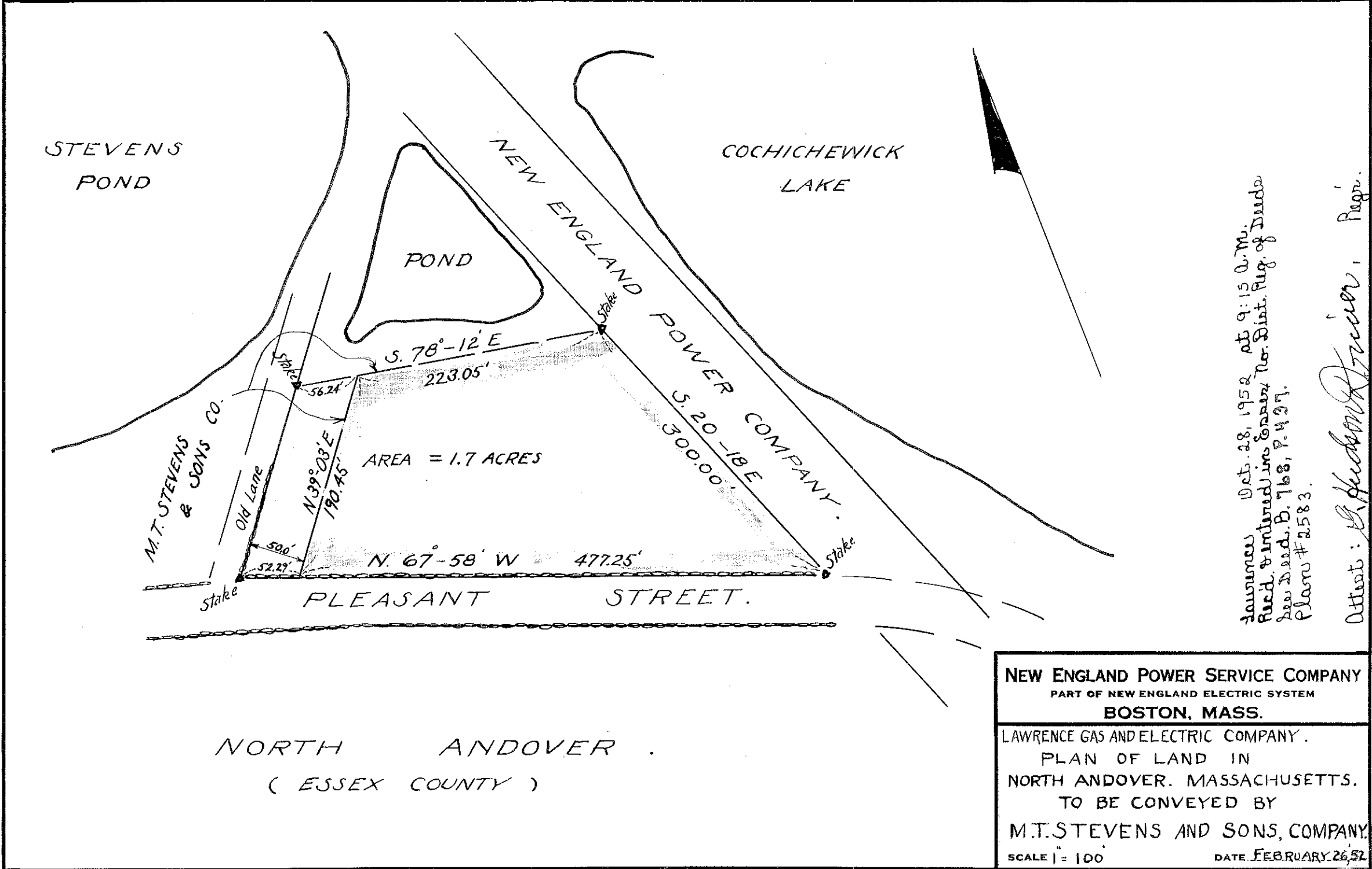


L-4758



Lawrence Oct. 28, 1952 at 9:15 A.M.
 Recd. & entered in Registry No. Dist. Reg. of Deeds
 New Deed. B. 768, P. 437.
 Plans # 2583.

Attests: *S. Frederickson*, Regr.

INCHES ON ORIGINAL

NEW ENGLAND POWER SERVICE COMPANY
 PART OF NEW ENGLAND ELECTRIC SYSTEM
 BOSTON, MASS.

LAWRENCE GAS AND ELECTRIC COMPANY.
 PLAN OF LAND IN
 NORTH ANDOVER, MASSACHUSETTS.
 TO BE CONVEYED BY
 M.T. STEVENS AND SONS, COMPANY.

SCALE 1" = 100' DATE FEBRUARY 26, 52'

NORTH ANDOVER
 (ESSEX COUNTY)

INCHES ON ORIGINAL

L-4758

see V. 712/19 New Tap L (N.A.T. 15)

L-4758