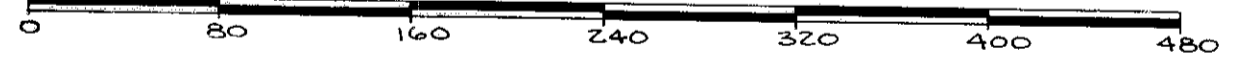
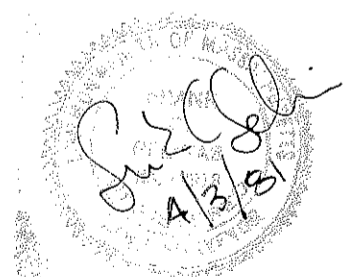


PLAN OF LAND
 LOCATED IN
NORTH ANDOVER, MA.
 PREPARED FOR
ANDREW CIRCLE REALTY TRUST
 SCALE: 1" = 80' DATE: APRIL 2, 1981



FRANK C. GELINAS AND ASSOCIATES INC.
 ENGINEERS AND ARCHITECTS
 NORTH ANDOVER OFFICE PARK
 NORTH ANDOVER, MA.



I CERTIFY THAT I HAVE CONFORMED TO THE RULES AND REGULATIONS OF THE REGISTERS OF DEEDS IN PREPARING THIS PLAN.
James O'Connell

NORTH ANDOVER PLANNING BOARD
 APPROVAL UNDER SUBDIVISION CONTROL
 LAW NOT REQUIRED
 MEMBER: *John J. Burke* 10-15-81 DATES

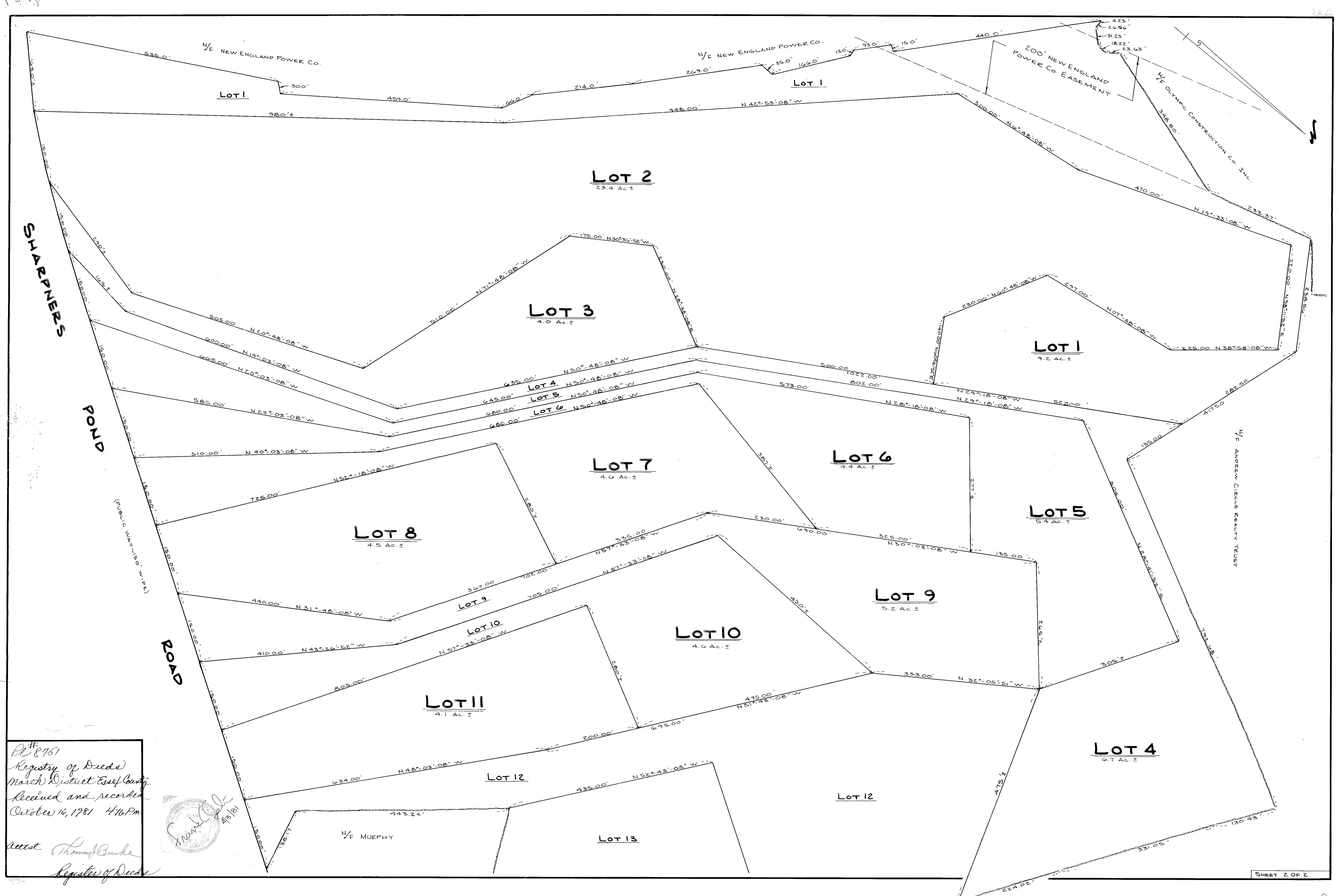
THE ABOVE ENDORSEMENT IS NOT A DETERMINATION AS TO CONFORMANCE WITH ZONING REGULATIONS BY THE NORTH ANDOVER PLANNING BOARD

NOTE: SEE N.E.R.P. PLAN No. 822T. ALSO SEE PLANS BY FRANK C. GELINAS AND ASSOCIATES DATED: SEPT. 19, 1979 & A PLAN DATED 3/16/81.

- NOTES: ① REMAINDER OF CONTIGUOUS LAND OWNED BY ANDREW CIRCLE REALTY TRUST TOTALS 33.7 ACRES WITH 1,315.82' OF FRONTAGE ON FOREST ST. AS SHOWN ON PLAN OF LAND PREPARED FOR E.A. & J.S. WATSON DATED SEPT. 19, 1979. F.C. GELINAS & ASSO. PLAN No. D-16 48.
- ② SHARPNEERS POND ROAD SIDE LINE LOCATION DETERMINED BY CENTER LINE OF TRAVELED WAY.
- ③ LOTS 1 THRU 13 TOTALS 93.5 AC.

PL #8951
 Registry of Deeds
 March District Essex County
 Received and recorded
 October 16, 1981 4:16 P.M.
 attest *Thomas Burke*
 Registrar of Deeds

LOCUS PLAN
 NO SCALE



PL 87151
 Registry of Deeds
 March District Essex County
 Received and recorded
 October 16, 1981 4:16 P.M.
 Attest Thomas Burke
 Register of Deeds

