

PLAN OF LAND  
LOCATED IN,  
NORTH ANDOVER, MA.  
PREPARED FOR,  
LANDSAIL CONST.

SCALE 1" = 40' JULY 1, 1980  
0 40 80 120 160

FRANK C. GELINAS & ASSOCIATES  
451 ANDOVER ST. NO. ANDOVER, MA.  
ENGINEERS & ARCHITECTS

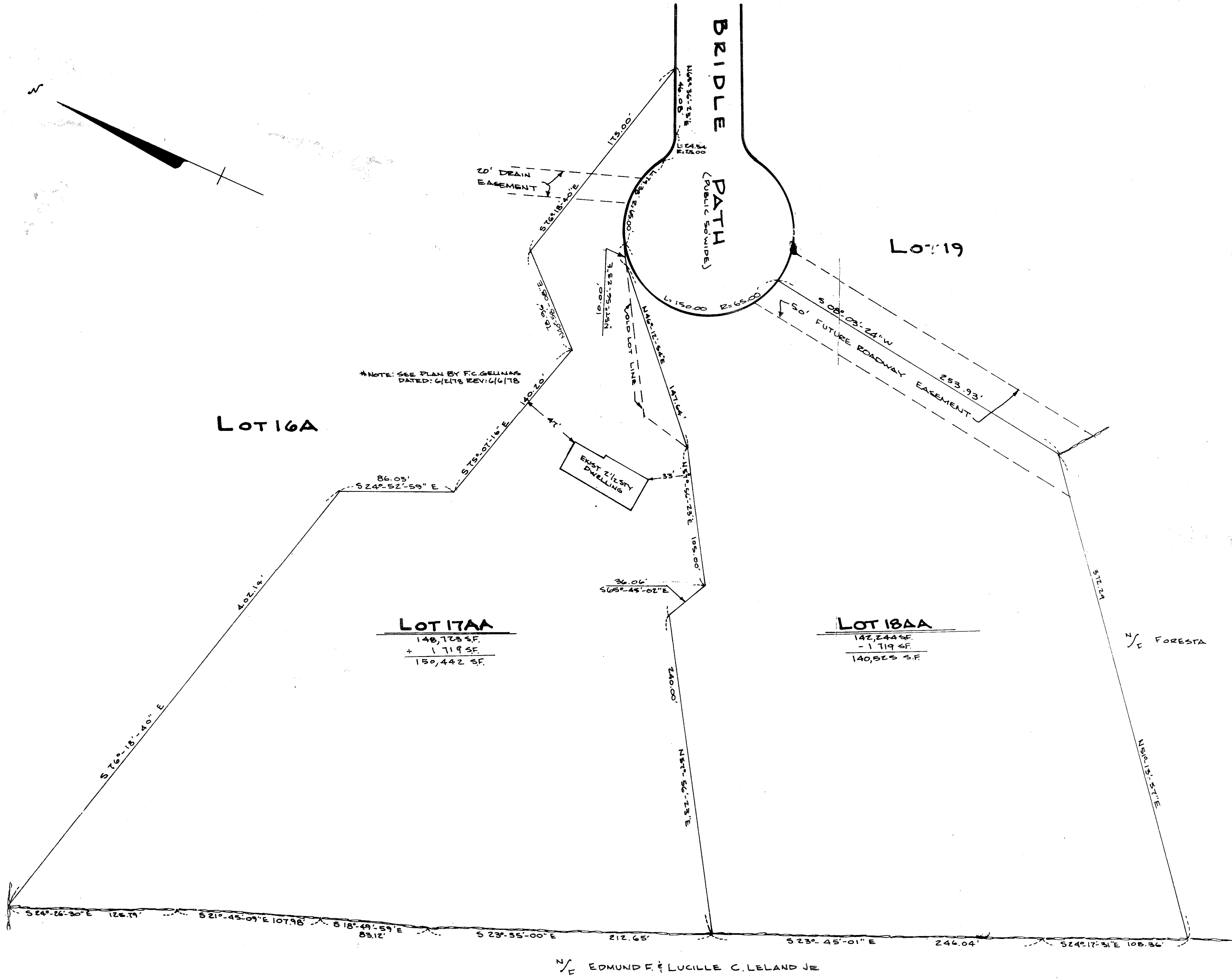
I CERTIFY THAT I HAVE CONFORMED TO THE  
RULES & REGULATIONS OF THE REGISTERS  
OF DEEDS IN PREPARING THIS PLAN  
Christina T. Jensen

**NORTH ANDOVER PLANNING BOARD**  
APPROVAL UNDER SUBDIVISION CONTROL  
LAW NOT REQUIRED

MEMBER: John J. Monteiro 7-7-80

THE ABOVE ENFORCEMENT IS NOT A DETERMINATION  
AS TO COMPLIANCE WITH ZONING REGULATIONS.  
NORTH ANDOVER PLANNING BOARD

[Signature]  
7/1/80



RC# 9545  
Registry of Deeds  
North District Essex County  
Received and recorded  
August 6, 1984 12:06 P.M.  
Attest Thomas Burke  
Registry of Deeds